



ISO 9001:2000 Certified

The Experienced Process Cooling Equipment Company

**Quality
Process Cooling
Equipment,
System Design
and Service.**

Portable Chillers

**Temperature
Controllers**

Central Chillers

**Pump/Reservoirs
& Cooling Towers**

Accessories

EQ Series Accuchiller Portable Chillers

Every EQ Series unit comes with microprocessor-based controls featuring dual, digital displays and 19 diagnostic indicators.

Additional features include a 5-year controller warranty with lifetime controller exchange price of \$175 and stainless steel brazed plate evaporator.

1 - 3 HP Air-cooled

2 - 3 HP Water-cooled

3 HP Remote condenser



LQ Series Accuchiller Portable Chillers

Advanced LQ Series portable chillers are built with highly efficient scroll compressors and other proven standard components like a nonferrous water system and encapsulated safety switches.

All LQ Series units come with a 5-year controller warranty with lifetime controller exchange price of \$175.

15 - 50 HP Air-cooled

15 - 60 HP Water-cooled

15 - 60 HP Remote condenser



SQ Series Accuchiller Portable Chillers

Versatile SQ Series portable chillers are built for quiet performance, easy accessibility and years of dependable service. Standard components include encapsulated safety switches, scroll compressor, NEMA 12 control panel, nonferrous water system and one or two recessed exterior panels with lockable, flush-mounted, pull-ring latches. All SQ Series units, including the top discharge air-cooled model shown at left, come with a 5-year controller warranty with lifetime controller exchange price of \$175.

5 - 14 HP Air-cooled

5 - 10 HP Water-cooled

5 - 10 HP Remote condenser

RA Series Aquatherm Temperature Controllers

RA Series units come standard with a silicon carbide/silicon carbide pump seal, a pump seal flush line, and a cast assembly to eliminate leaks. Microprocessor-based controller features 15 diagnostic lights and a 5-year warranty with a \$175 lifetime exchange price. Standard features on all RA Series units also include a lifetime warranty on the castings and pump seal and a 2-year warranty on parts and labor.

¾ - 10 HP, 9 - 60 kW



RO Series Oiltherm Hot Oil Temperature Controllers

Oiltherm units are designed for operation to 575° F. These quiet operating units feature an automatic oil pre-heat and come standard with stainless steel heat exchangers, fan-cooled controls and built-in, full-week timers. Multi-stage centrifugal pump means no oil leaks found with positive displacement pumps. Available with negative pressure design for mold draining applications.

1½ - 2 HP, 6 - 36 kW



RV Series Vactherm Negative Pressure Units

Vactherm's unique injector design allows units to operate simultaneously with pressure and vacuum. These nonferrous RV Series units eliminate mold leaks while minimizing the amount of air drawn into the process water.

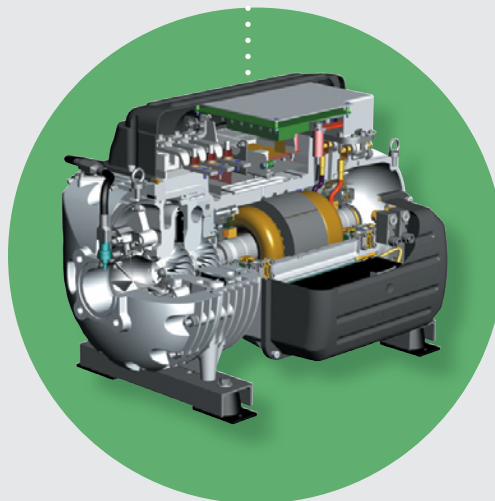
2 HP, 9 kW





TC Series Central Chillers

These central chillers are the most reliable, most energy efficient and the quietest industrial chillers available. Units can be monitored remotely and each comes standard with frictionless, oil-free compressors and integrated VFD motor control. Energy savings of up to 70 percent is possible with TC Series central chillers.

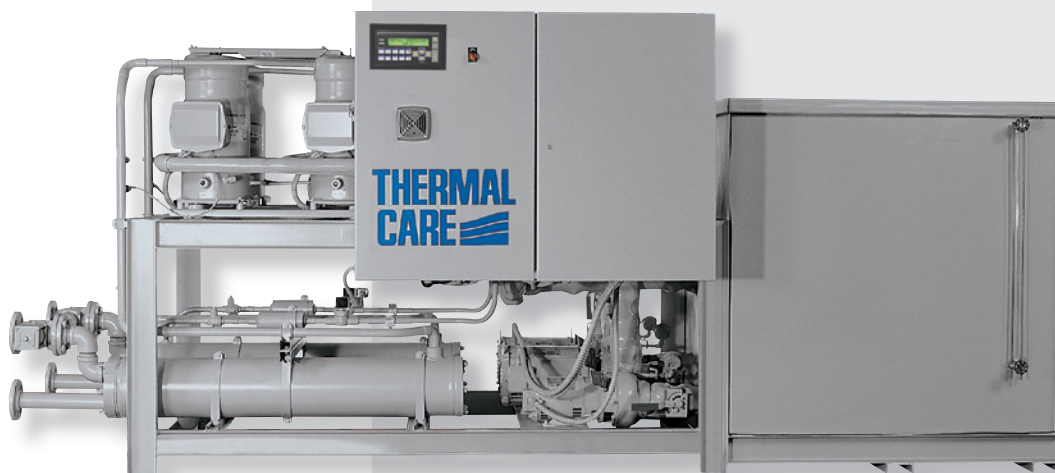


Built with Revolutionary Compressor Technology

Advanced compressor technology with oil-free, magnetic bearings helps deliver unprecedented efficiency and reliability because motor shaft rotation is precise and frictionless.

60 - 180 tons Water-cooled

60 - 180 tons Remote condenser



TS Series Central Chillers

For economical, plant-wide systems, TS Series central chillers feature energy-efficient, trouble-free scroll compressors, stainless steel brazed plate evaporators, two independent refrigeration circuits, NEMA 4 control panel, water regulating valves, encapsulated refrigeration safeties, alarm horn and PLC. Units are available with integral stainless steel reservoirs.

20 - 100 tons **Water-cooled**

20 - 100 tons **Remote condenser**

TX Series Central Chillers

Designed with one or two rotary screw compressors, TX Series central chillers come standard with encapsulated refrigeration safeties, electronic water regulating valves, NEMA 4 control panel and an alarm horn. Operation is regulated by a PLC that comes with an easy-to-operate color touchscreen HMI.

40 - 440 tons **Water-cooled**

40 - 440 tons **Remote condenser**



Air-cooled Remote Condensers

High quality, modular, corrosion-resistant fan units completely eliminate the need for a cooling tower and are designed to work efficiently with any series central chiller from Thermal Care. Variable speed fan control allows operation to -20°F.



PT, PTF, PTP & PTS Series Pump/Reservoir Assemblies

Every pump reservoir is custom-engineered for each tower or chiller application. Features include a solid deck, grooved pipe connection system, non-overloading pumps and a mounted NEMA 4 control panel with a full array of safeties and alarms. Reservoirs are available in fiberglass, polyethylene, steel and stainless steel.

250 - 6,000 gallons



FT Series Cooling Towers

The FT Series cooling towers have a highly-efficient, induced-draft design. The strong exterior shell is constructed of lightweight FRP. Units come standard with a 10-year warranty on the shell.

22 - 120 tons

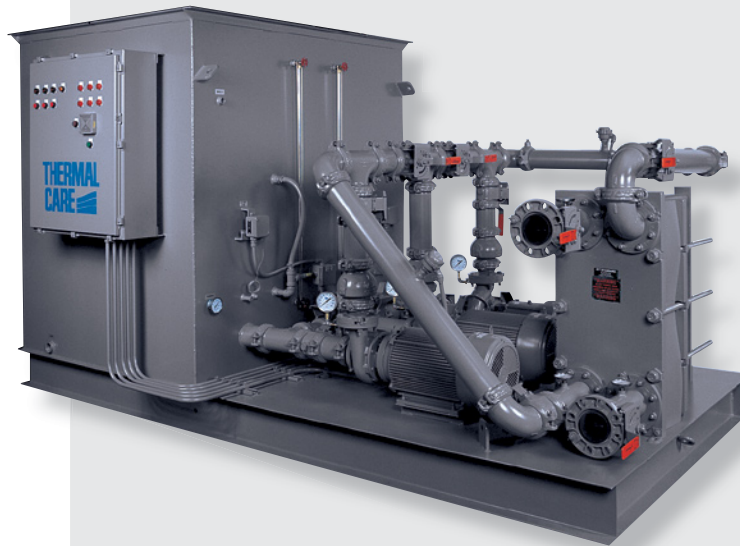


FC Series Cooling Towers

Made of totally nonferrous materials, FC Series cooling towers come standard with a 10-year shell warranty and a 5-year warranty on the complete tower – including the motor with its double-baked exterior finish housing. Motor windings have maximum protection against moisture; bearings are permanently lubricated; and packing enclosures come with extra grease.

100 - 240 tons





HX Series Plate & Frame Heat Exchangers

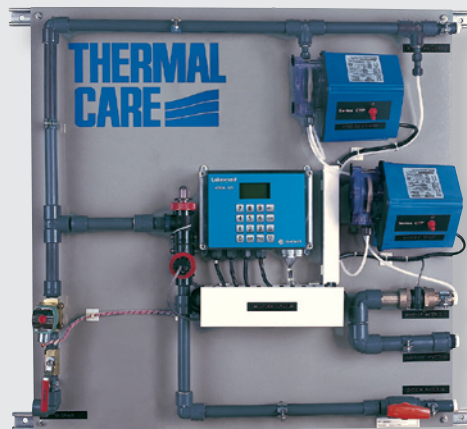
When used in conjunction with a cooling tower system, these units provide a manufacturing plant with clean, closed-loop water and the low-operating cost benefits a cooling tower system provides.

Tower Water Treatment Systems

Our economical water treatment systems prevent naturally occurring scale and biological growth in cooling tower water and several available filtration solutions can remove particulate matter from cooling system water.

The TWC Series water treatment system is computer controlled and incorporates all the necessary facets of a tower water treatment system on a single, space-saving panel.

System information is displayed on a LCD screen.



TWC Series

Filtration Equipment

Remove heavy-duty suspended solids from both cooling tower and chilled water systems using any of our filtration equipment options. Filters available include

SF Series strainer filters,
BF Series bag filters,

PS Series sand media filters
and TD Series turbo disc filters.



SF Series



BF Series



PS Series



TD Series

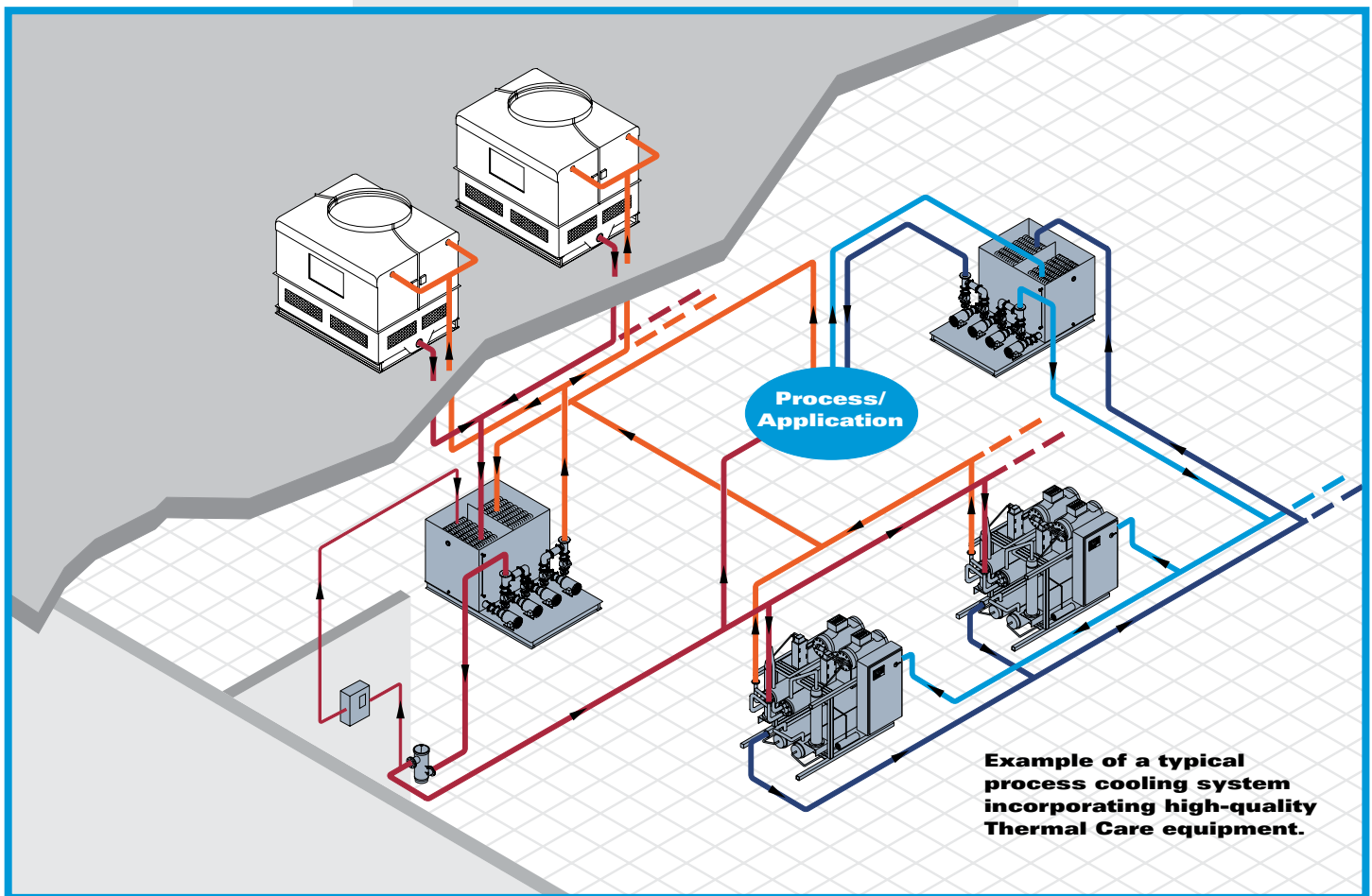
System design. PLC integration. Reliable service.

Thermal Care understands your process cooling needs.

Thermal Care, Inc.® excels in initial application engineering to properly assess customer requirements and to custom design a system to best meet those needs. Many systems incorporate PLCs to provide control and diagnostics, and if desired, can be accessed via a modem for a quick diagnosis of system problems.

We then work closely with you through manufacturing, installation, and start-up to assure a perfect operating system. Outstanding service and parts support after the system is operational completes our total customer support program.

Every system comes with fully documented CAD drawings available in either printed or electronic format. All components in a system are covered by a 1-year parts and labor warranty.



**Example of a typical
process cooling system
incorporating high-quality
Thermal Care equipment.**

THERMAL CARE

ISO 9001:2000 Certified

7720 N. Lehigh Avenue
Niles, IL 60714-3491

Toll-free 888-828-7387
Telephone 847-966-2260
Fax 847-966-9358
www.thermalcare.com

Manufacturer reserves the right to change specifications and design without notice or obligation.
Thermal Care, Inc. is a registered trademark of MFRI, Inc.
Printed in USA. Form 1-210.4